

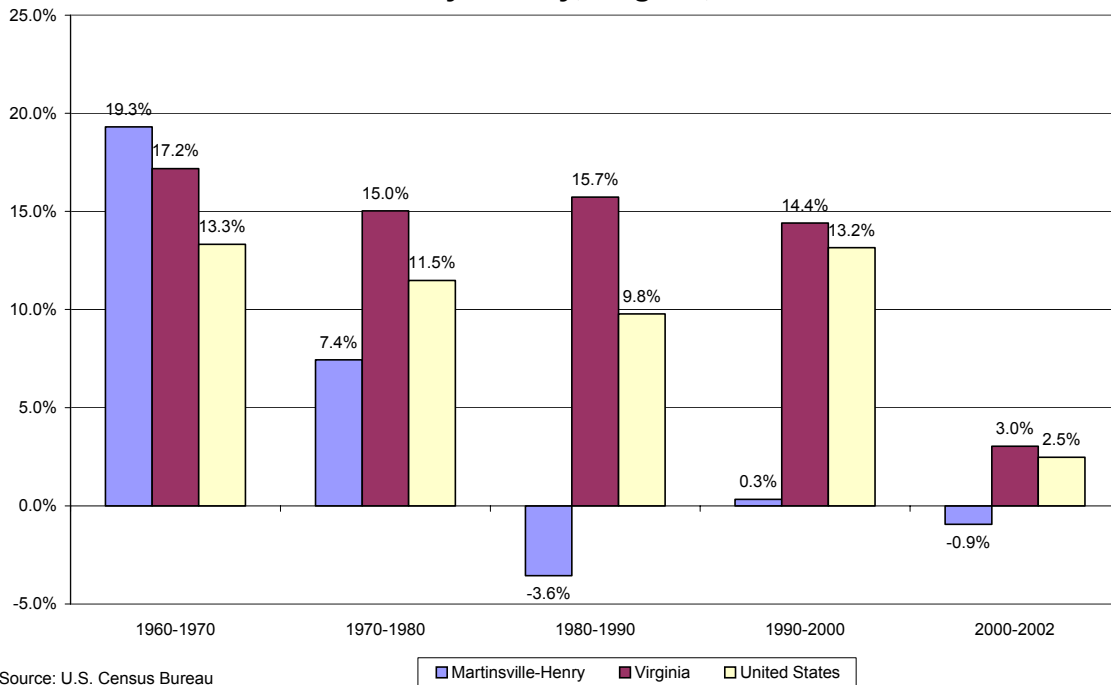
MARTINSVILLE-HENRY COUNTY VA

ECONOMIC & DEMOGRAPHIC
PROFILE

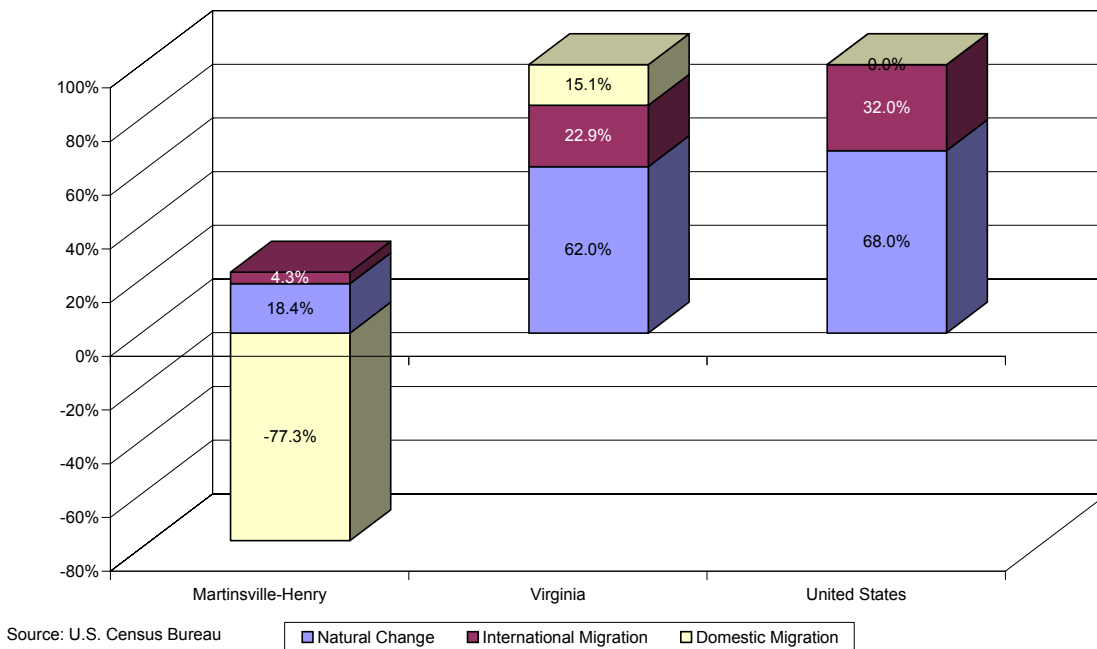
**COMBINED CITY-COUNTY
DATA CHARTS**

DECEMBER 17, 2003

Population Change, 1960 - 2002:
Martinsville-Henry County, Virginia, and United States

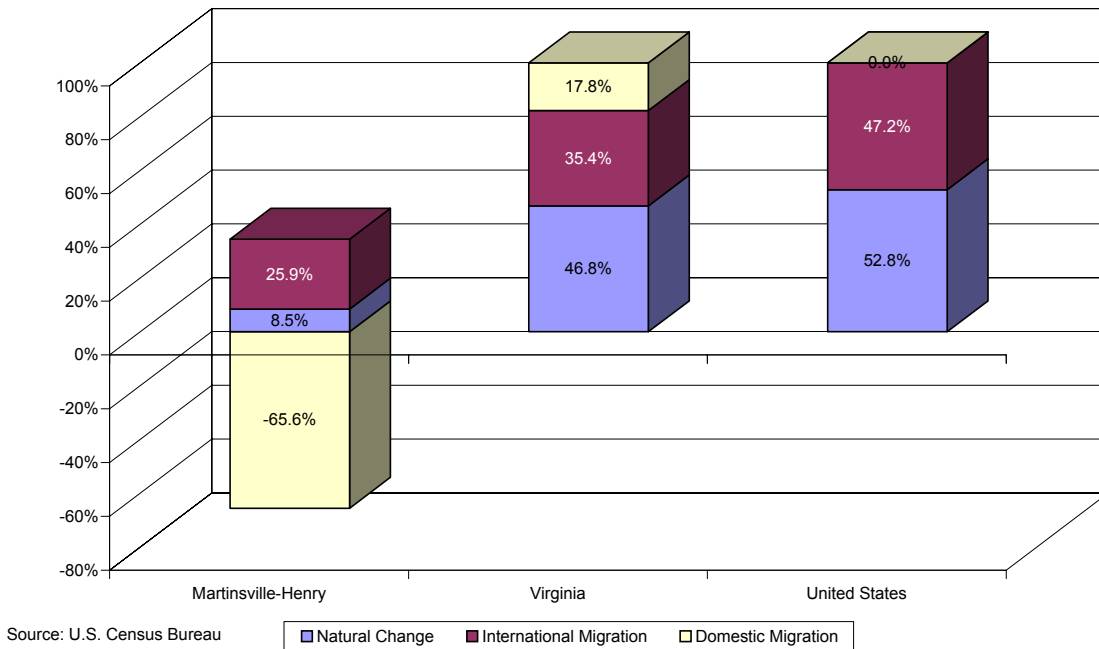


Components of Population Change, 1990 - 1999:
Martinsville-Henry County, Virginia, and United States

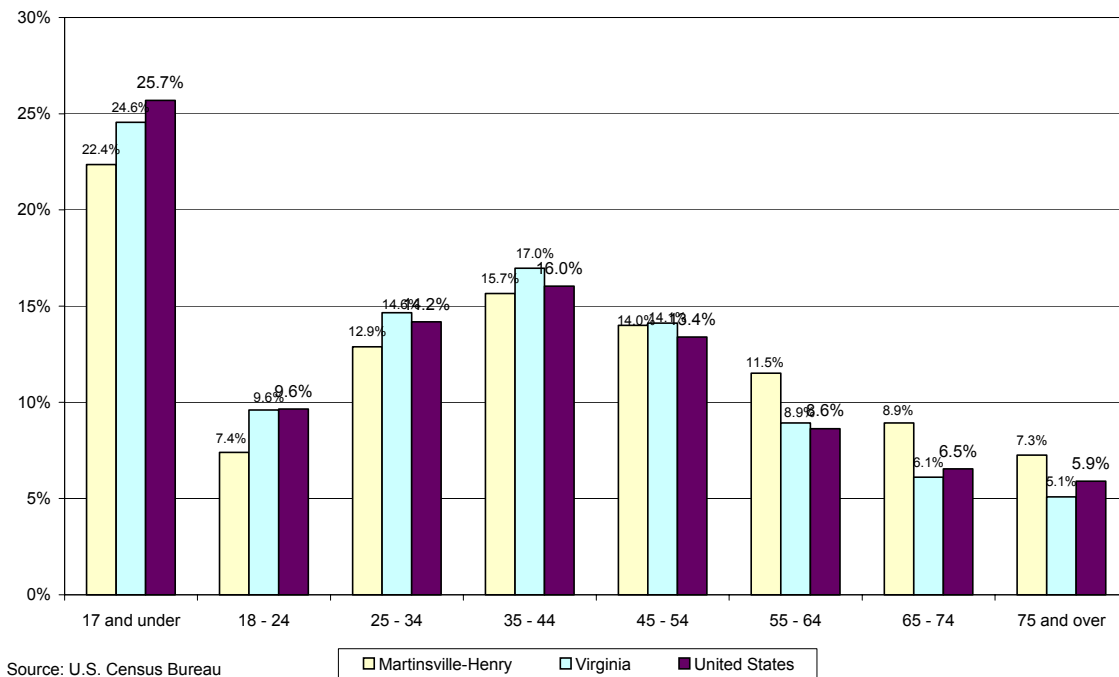


Economic and Demographic Profile Martinsville-Henry County, Virginia

Components of Population Change, 2000 - 2002: Martinsville-Henry County, Virginia, and United States

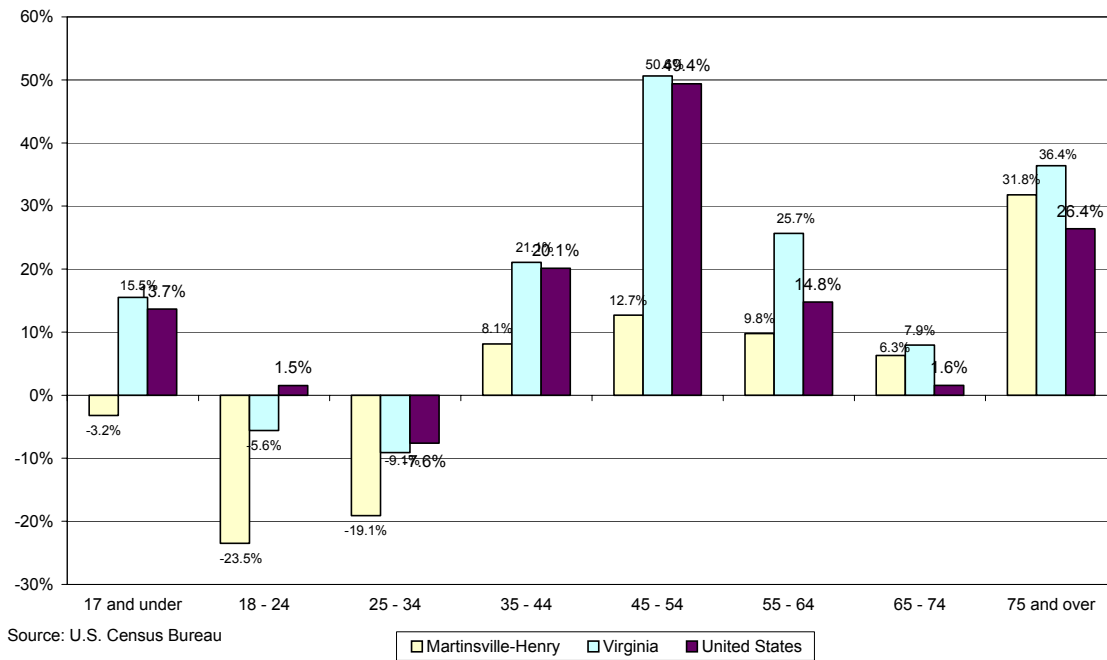


Age Distribution, 2000: Martinsville-Henry County, Virginia, and United States



Economic and Demographic Profile Martinsville-Henry County, Virginia

**Percent Change in Population by Age, 1990 to 2000:
Martinsville-Henry County, Virginia, and United States**



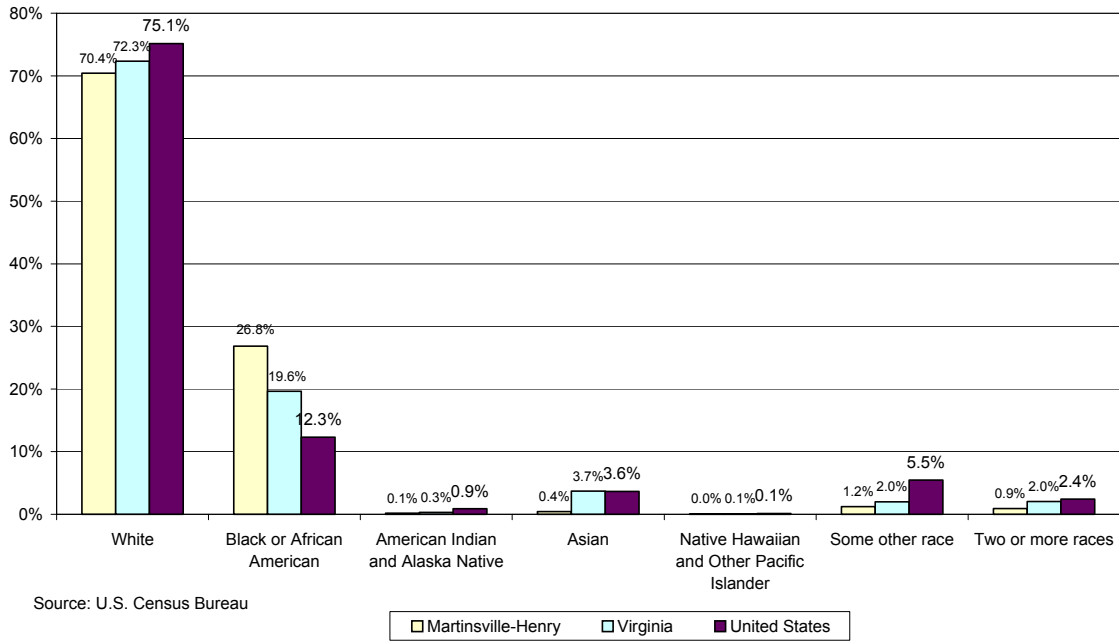
Median Age, 1990 and 2000

Year	Martinsville-Henry County	Virginia	United States
1990	36.6	32.6	34.1
2000	40.1	35.7	35.3

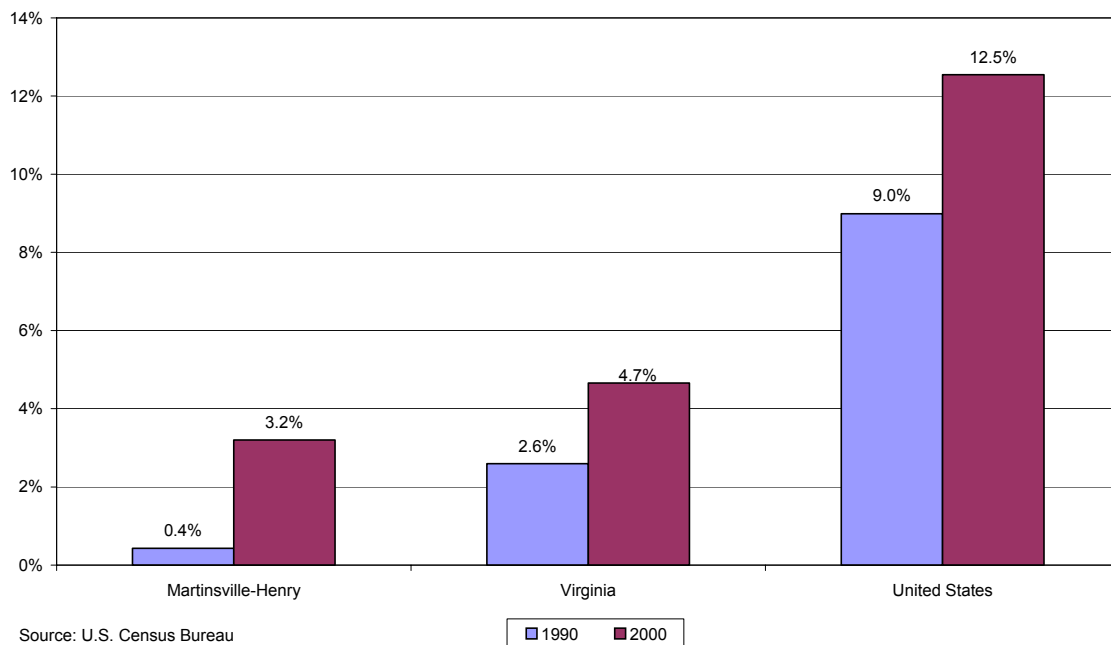
Source: U.S. Census Bureau

Economic and Demographic Profile Martinsville-Henry County, Virginia

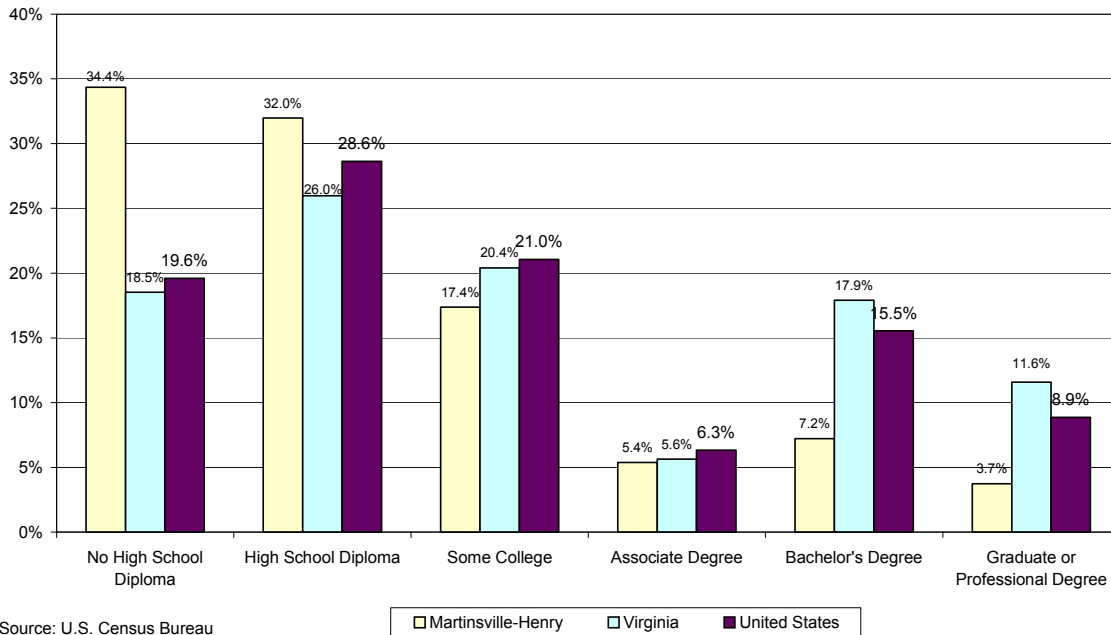
Racial Composition, 2000: Martinsville-Henry County, Virginia, and United States



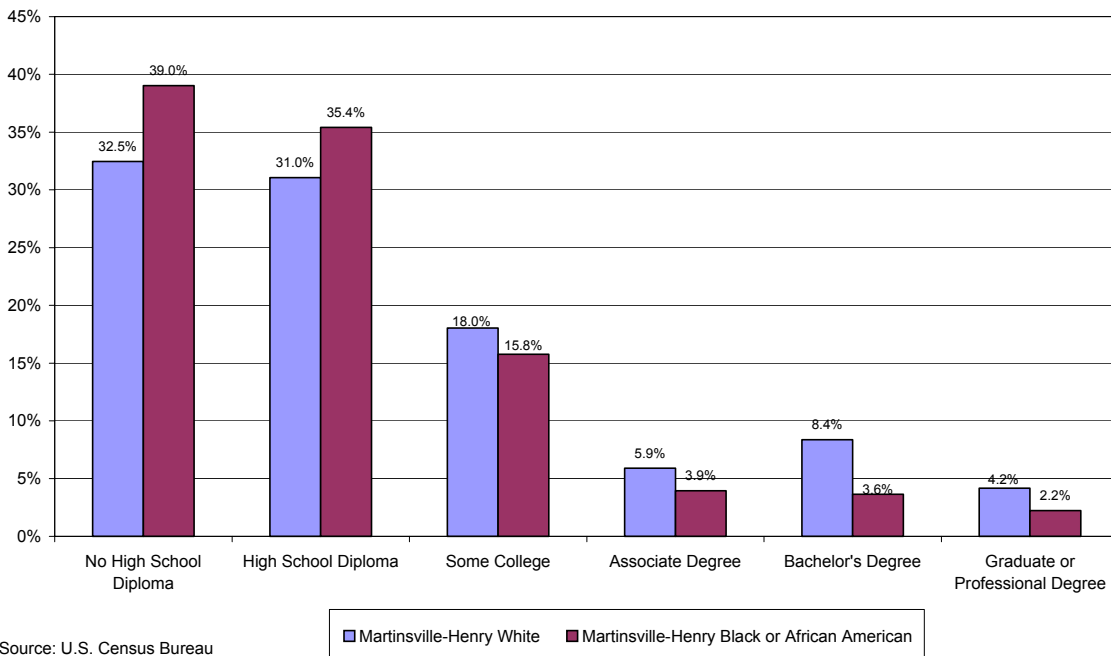
Hispanic Population, 1990 and 2000: Martinsville-Henry County, Virginia, and United States



**Educational Attainment for Population Over 25, 2000:
Martinsville-Henry County, Virginia, and United States**

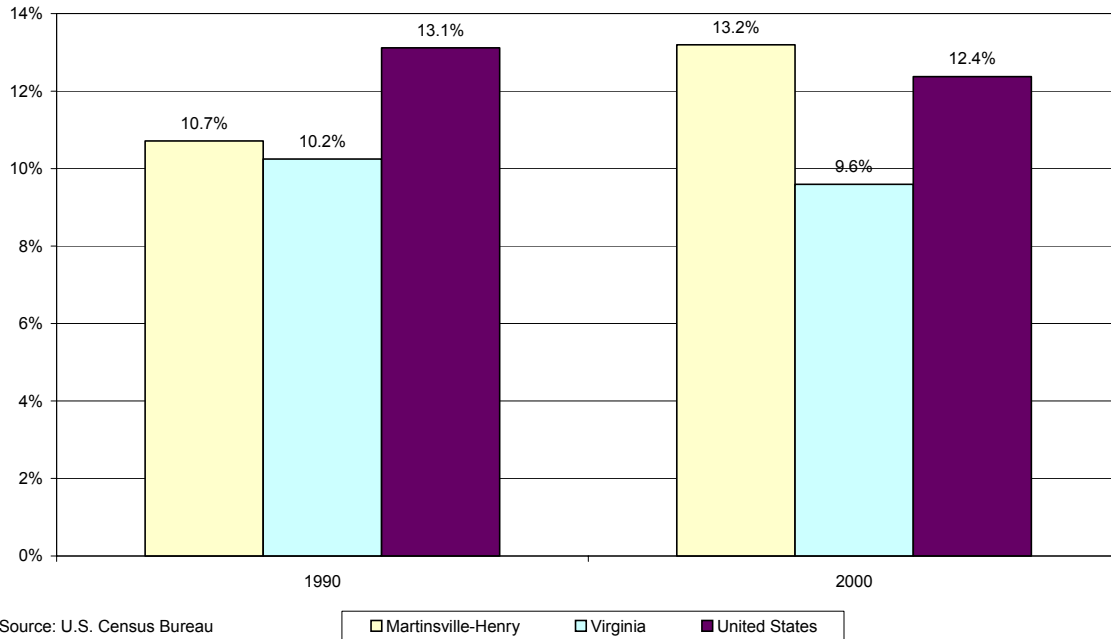


**Educational Attainment for White and Black or African American
Population Over 25 Years Old, 2000: Martinsville-Henry County**

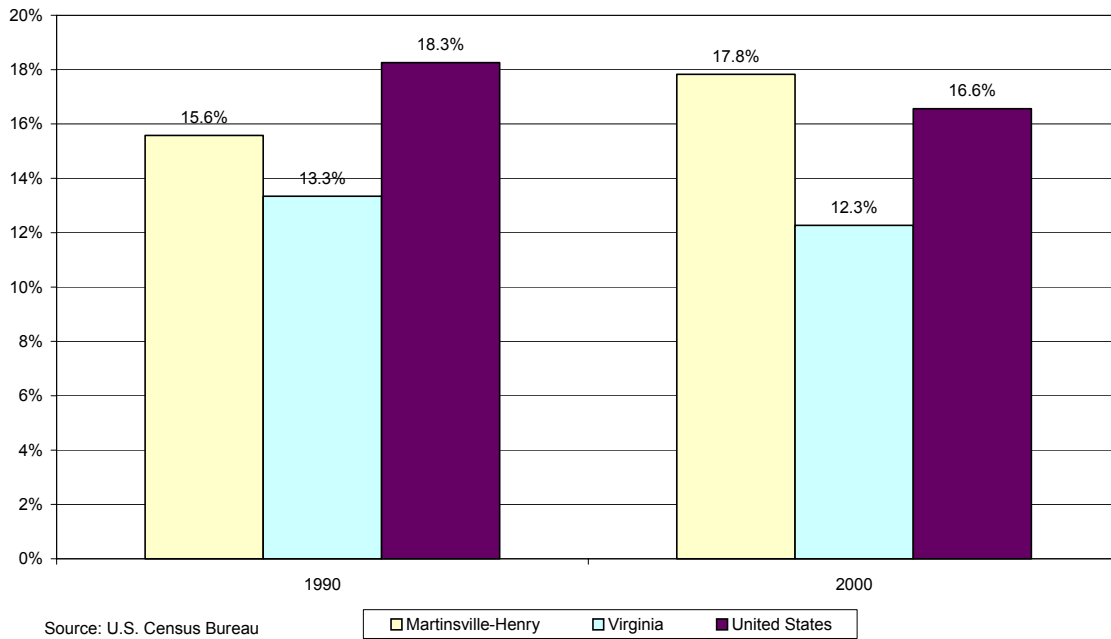


Economic and Demographic Profile Martinsville-Henry County, Virginia

**Percent of Individuals Living in Poverty, 1990 and 2000:
Martinsville-Henry County, Virginia, and United States**

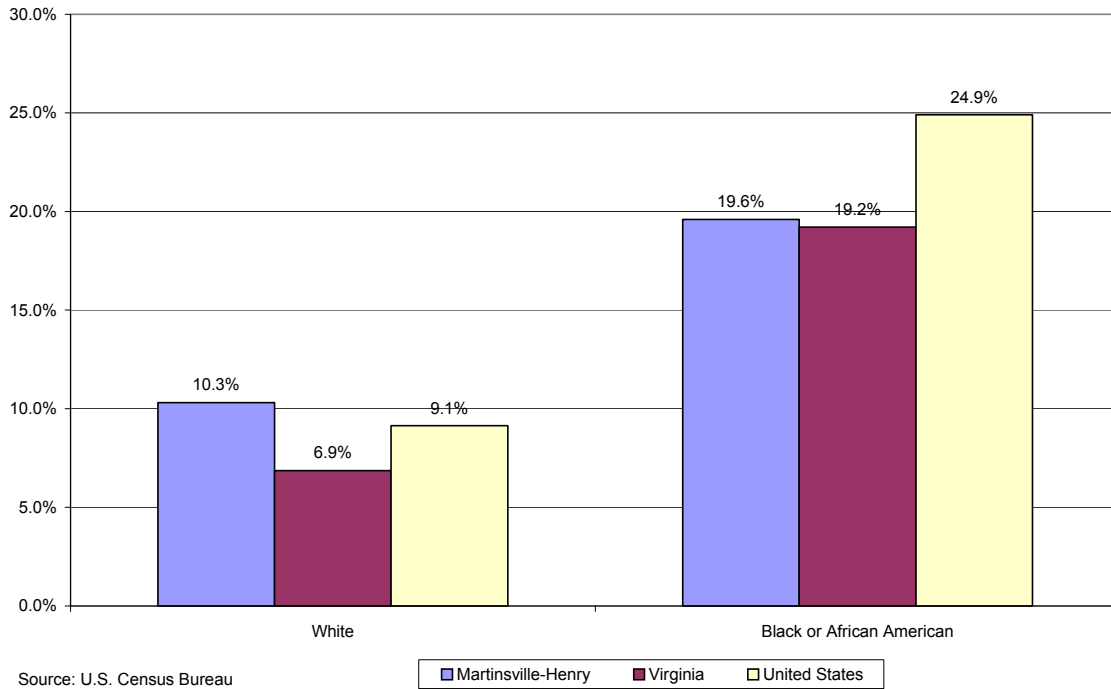


**Percentage of Children 17 and Under Living in Poverty, 1990 and
2000: Martinsville-Henry County, Virginia, and United States**

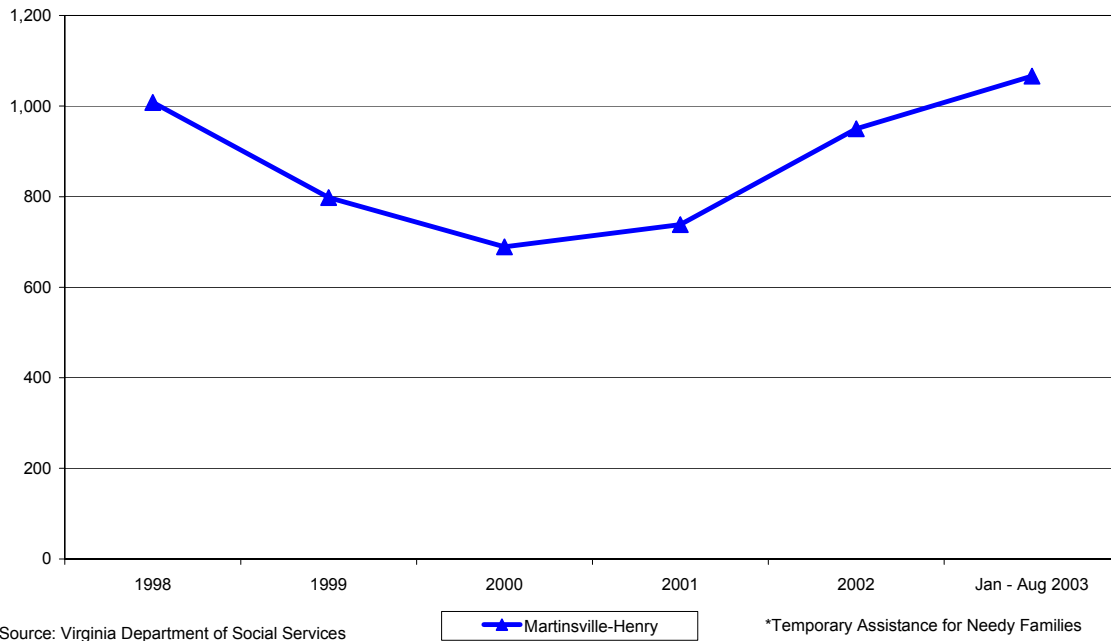


Economic and Demographic Profile Martinsville-Henry County, Virginia

Percentage of White and Black or African American Individuals Living in Poverty, 2000: Martinsville-Henry County, Virginia, and U.S.

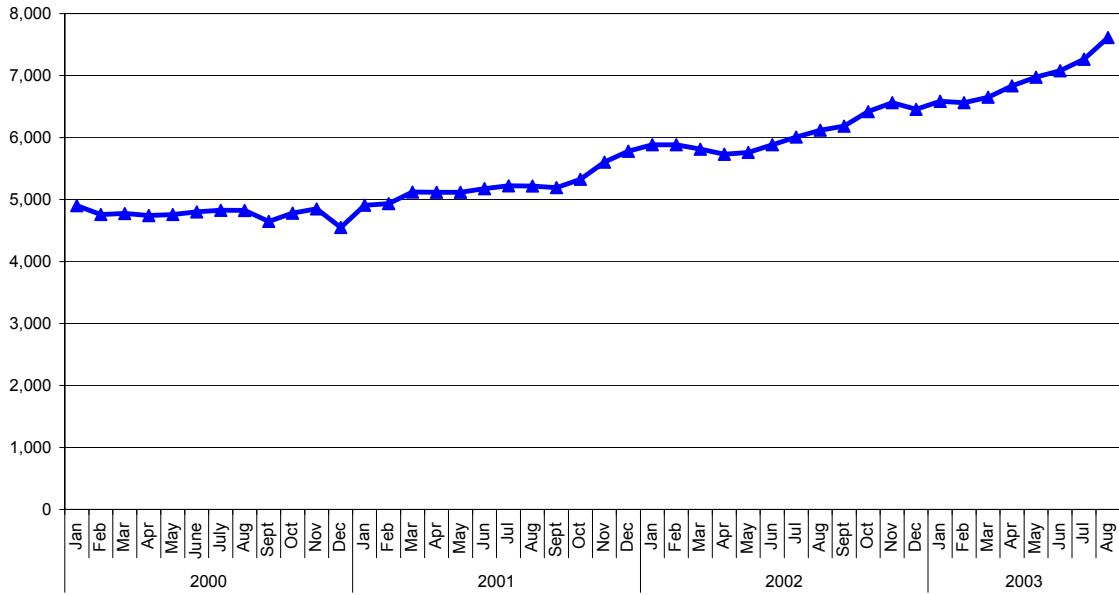


**Number of TANF* Participants, 1998-August 2003:
Martinsville-Henry County**



Economic and Demographic Profile Martinsville-Henry County, Virginia

Number of Food Stamp Participants, January 2000 - August 2003: Martinsville-Henry County*



Source: Virginia Department of Social Services

▲ Martinsville-Henry

*Prior to September 2000, the case counts included supplementary payments, resulting in slight overcounting for these months.

Owner-Occupied Housing Units, 1990 and 2000

	Martinsville-Henry	Virginia	United States
1990	73.8%	66.3%	64.2%
2000	73.3%	68.1%	66.2%

Source: U.S. Census Bureau

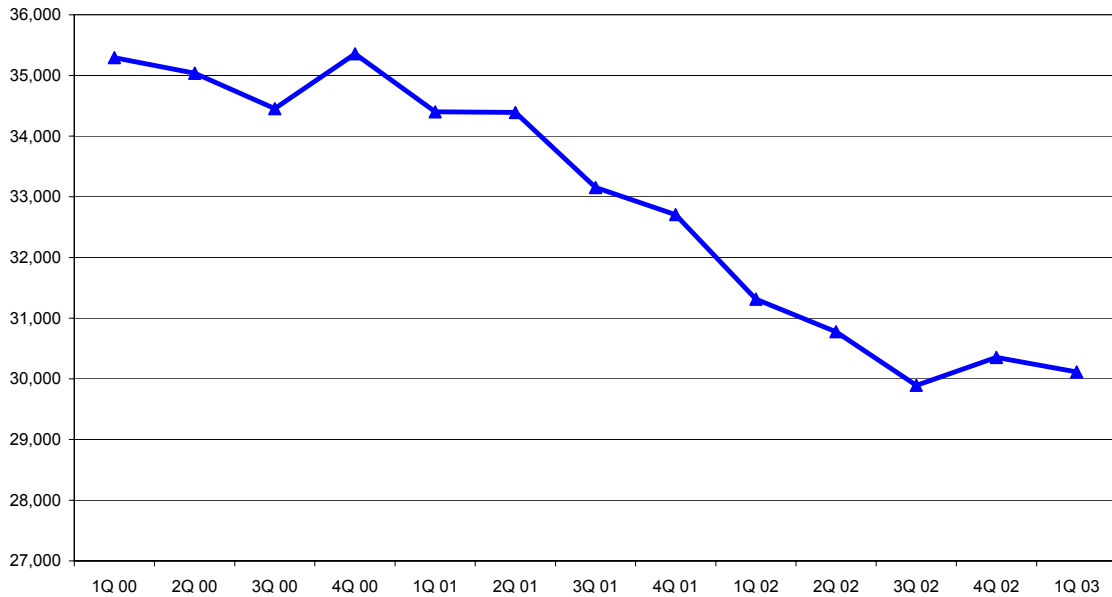
**Economic and Demographic Profile
Martinsville-Henry County, Virginia**

Top Employers, Fourth Quarter 2002: Martinsville-Henry County

Name	NAICS Category	Number of Employees
Henry County School Board	Educational services	1000 or more
Stanley Furniture Company, Inc.	Furniture and related product manufacturing	1000 or more
FCI Operations, LLC (Pillowtex)	Textile mills	500-999
Bassett Furniture Industry	Furniture and related product manufacturing	500-999
American Furniture Co., Inc.	Furniture and related product manufacturing	500-999
Springs Basic Bedding	Textile product mills	500-999
Sara Lee Casualwear Division	Warehousing and storage	500-999
CP Films	Plastics and rubber products manufacturing	500-999
Newroads, Inc.	Nonstore retailers	500-999
Memorial Hospital	Hospitals	500-999
Hooker Furniture	Furniture and related product manufacturing	500-999
Martinsville City Schools	Educational services	500-999
County of Henry	Justice, public order, and safety activities	250-499
Patrick Henry Community College	Educational services	250-499
Nationwide Homes, Inc.	Wood product manufacturing	250-499
ABH Staffing, Inc.	Administrative and support services	250-499
City of Martinsville	Justice, public order, and safety activities	250-499
Wal Mart Associates, Inc.	General merchandise stores	250-499
Nylstar	Textile mills	100-249
VF Knitwear Services, LLC	Warehousing and storage	100-249
Bassett Mirror Company, Inc.	Nonmetallic mineral product manufacturing	100-249
Drake Extrusions, Inc.	Chemical manufacturing	100-249
Pulaski Furniture Corp.	Computer and electronic product manufacturing	100-249
J&J Southeast	Paper manufacturing	100-249
Warren Trucking Company	Truck transportation	100-249
Bank Services of Virginia, Inc.	Internet service providers, web search portals, and data processing services	100-249
Winn Dixie	Food and beverage stores	100-249
Stone Container Corp.	Paper manufacturing	100-249
Piedmont Community Services	Administration of human resource programs	100-249
Ameristaff, Inc.	Administrative and support services	100-249
Blule Ridge Rehab Center	Nursing and residential care facilities	100-249
Advantage Staffing Resources	Administrative and support services	100-249
Potomac Personnel Service	Administrative and support services	100-249
Kelly Services	Administrative and support services	100-249
West Window Corp.	Fabricated metal product manufacturing	100-249
Food Lion	Food and beverage stores	100-249
King's Grant Retirement Community	Nursing and residential care facilities	100-249
Multi Wall Packaging	Paper manufacturing	100-249
Lowes Home Centers, Inc.	Building material, garden equipment and supplies dealers	100-249
Martinsville Health & Rehab	Nursing and residential care facilities	100-249

Source: Virginia Employment Commission

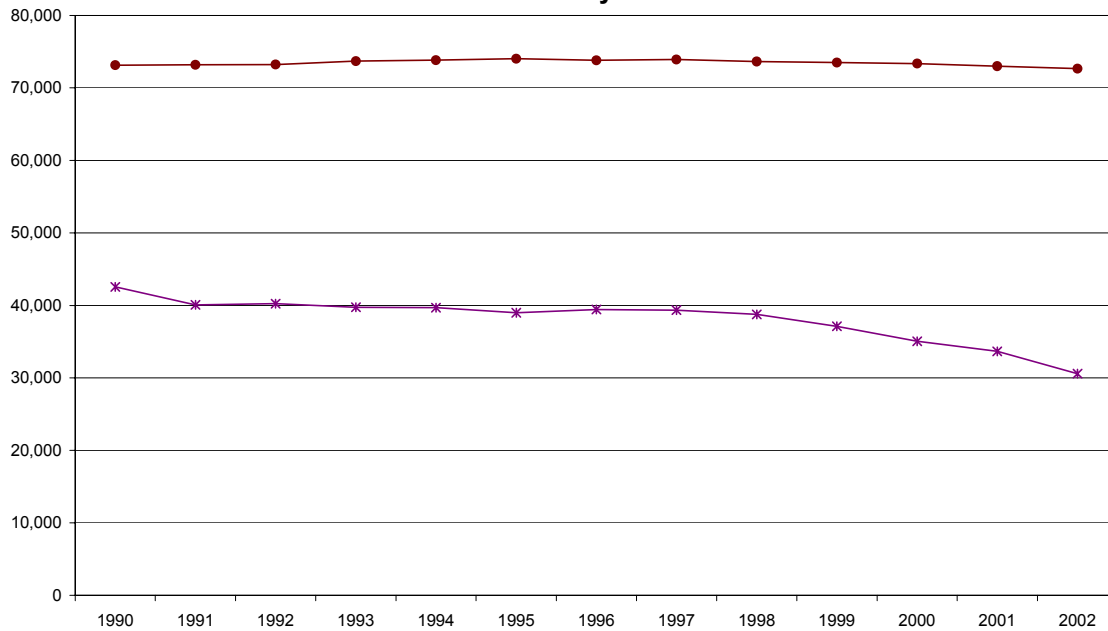
Total Employment, First Quarter 2000 -
First Quarter 2003: Martinsville-Henry County



Source: Virginia Employment Commission

▲ Martinsville-Henry

Total Employment and Population, 1990 - 2002: Martinsville-Henry
County

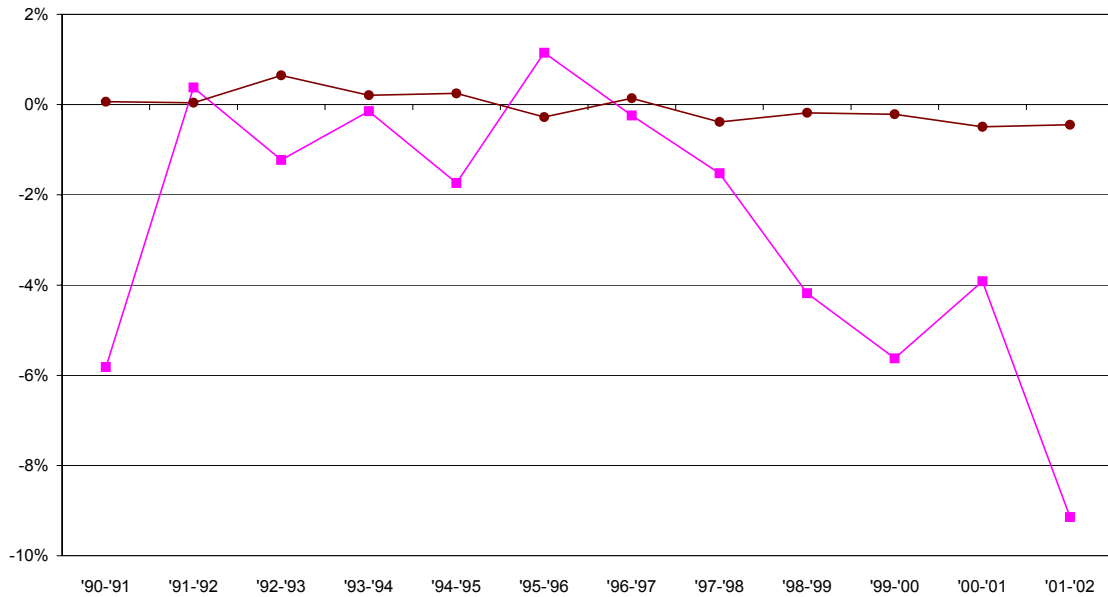


Source: Virginia Employment
Commission and U.S. Census Bureau

* Martinsville-Henry Employment ● Martinsville-Henry Population

Economic and Demographic Profile Martinsville-Henry County, Virginia

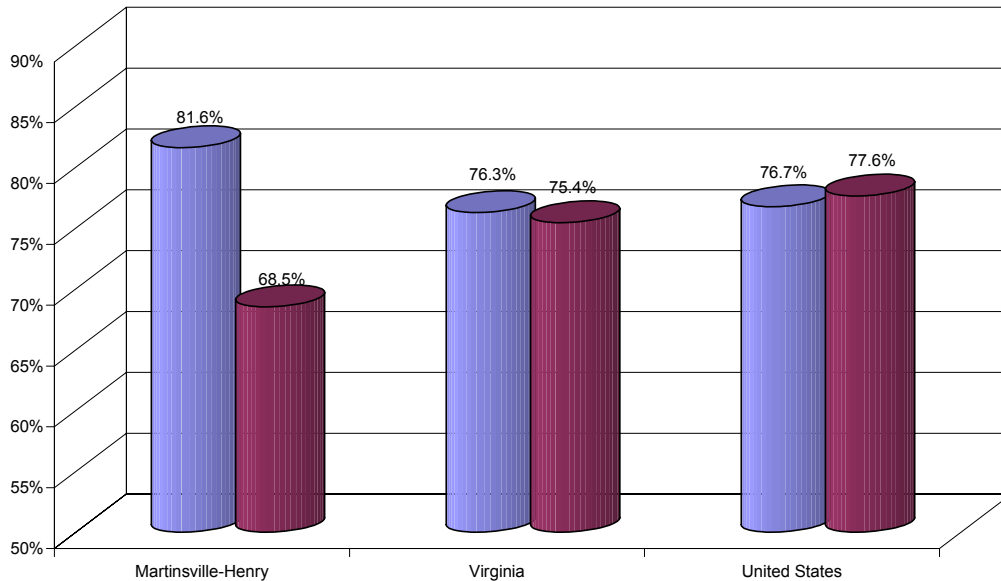
Annual Percent Total Employment and Population Change, 1990 - 2002: Martinsville-Henry County



Sources: Virginia Employment Commission and U.S. Census Bureau

—■— Martinsville-Henry Employment —●— Martinsville-Henry Population

Labor Force Participation Rates, 1990 and 2000: Martinsville-Henry County, Virginia, and United States



Source: U.S. Bureau of Labor Statistics and U.S. Census Bureau

■ 1990 ■ 2000

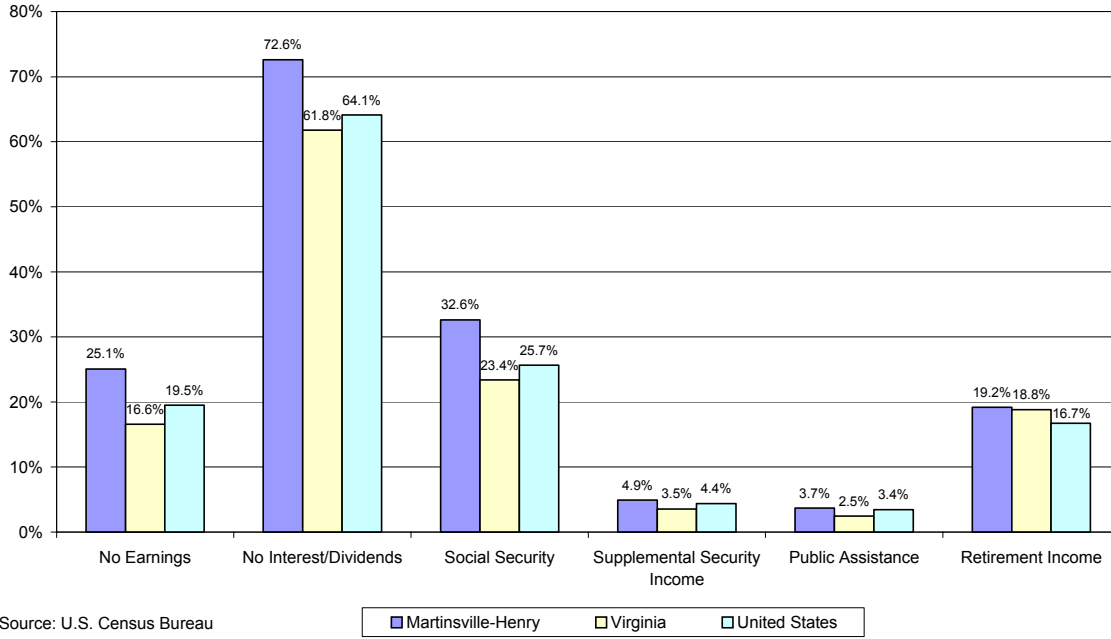
Economic and Demographic Profile Martinsville-Henry County, Virginia

Percentage Working in County of Residence, 1990 and 2000

	1990	2000
Martinsville-Henry	76.9%	60.9%
Virginia	51.7%	48.2%
United States	76.1%	73.3%

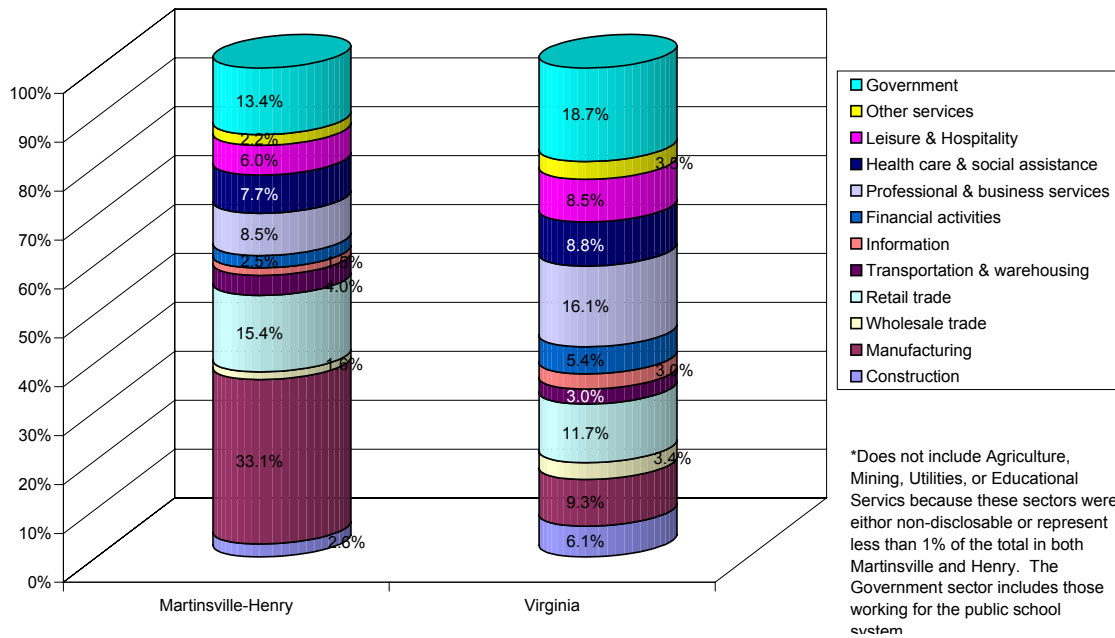
Source: U.S. Census Bureau

Percent of Households Receiving and Not Receiving Types of Income, 2000: Martinsville-Henry County, Virginia, and United States



Economic and Demographic Profile Martinsville-Henry County, Virginia

**Employment Sectors by Percentage of Total Employment,
First Quarter 2003: Martinsville-Henry County, and Virginia***



Source: Virginia Employment Commission

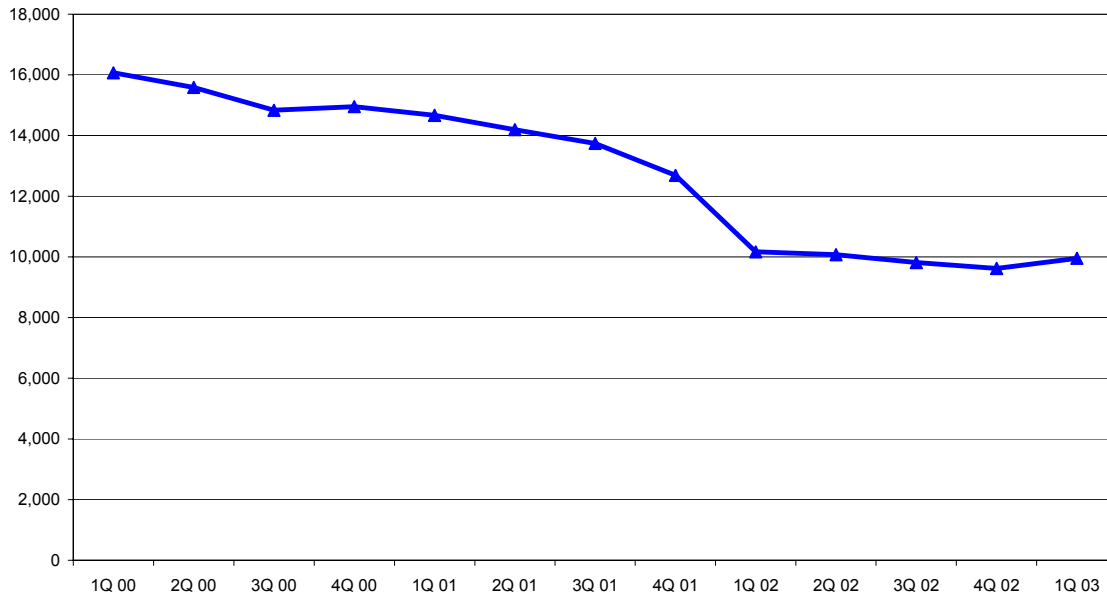
Detailed Employment Sectors Employment and Percentage of Total, First Quarter 2003*

	Martinsville-Henry		Virginia
	Employment	% of Total	% of Total
Construction	789	2.6%	6.1%
Manufacturing	9,955	33.1%	9.3%
Wholesale trade	467	1.6%	3.4%
Retail trade	4,629	15.4%	11.7%
Transportation and warehousing	1,208	4.0%	3.0%
Information	458	1.5%	3.0%
Finance and insurance	583	1.9%	3.8%
Real estate, rental, and leasing	235	0.8%	1.6%
Professional and technical services	507	1.7%	8.6%
Management of companies and enterprises	77	0.3%	2.0%
Administrative and waste services	1,969	6.5%	5.5%
Health care and social assistance	2,314	7.7%	8.8%
Arts, entertainment, and recreation	197	0.7%	1.0%
Accommodation and food services	1,600	5.3%	7.5%
Other services	658	2.2%	3.5%
Government	4,032	13.4%	18.7%

*ND indicates the data were not available due to privacy concerns. The chart does not include Agriculture, Mining, Utilities, or Educational Services because these sectors were either non-disclosable or represented less than 1% of the total in both Martinsville and Henry. Government represents all public sector employees including those working for the public school system.

Source: Virginia Employment Commission

Manufacturing Total Employment, First Quarter 2000 -
First Quarter 2003: Martinsville-Henry County*



Source: Virginia Employment Commission

▲ Martinsville-Henry

*Between the fourth quarter of 2001 and the first quarter of 2002, the VEC changed from the SIC to the NAICS classification system which is reflected in this data.

Percent Change in Total Employment, First Quarter 2000 to First Quarter 2003*

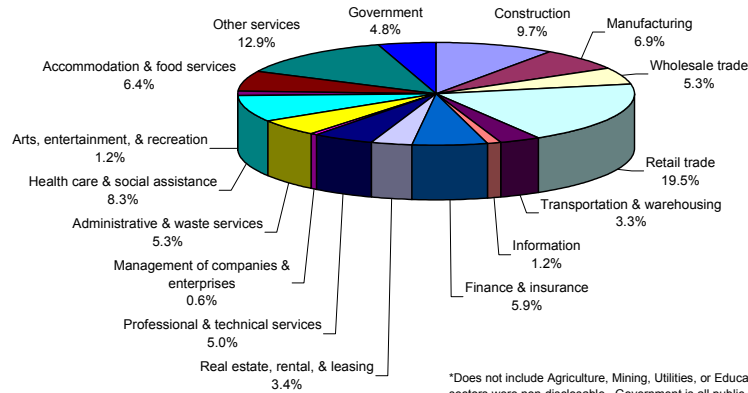
	Martinsville	Virginia
Construction	-22.9%	3.1%
Manufacturing	-38.0%	-20.5%
Transportation and warehousing	5.2%	-43.5%
Wholesale trade	-43.7%	-24.0%
Retail trade	-18.1%	-34.5%
Finance, insurance, and real estate	19.4%	-0.4%
Services	39.9%	38.6%
Government	-3.1%	3.3%

*This chart represents a rough estimate of change because 2000 data is based on the SIC classification code while 2003 data is based on the NAICS code. Due to the restraints of the SIC code, the Information sector is included in Services.

Source: Virginia Employment Commission

Economic and Demographic Profile Martinsville-Henry County, Virginia

**Establishments by Percentage of Total,
First Quarter 2003, Martinsville-Henry County***



Source: Virginia Employment Commission

*Does not include Agriculture, Mining, Utilities, or Educational Services because these sectors were non-disclosable. Government is all public sector establishments including the public school system.

Employment Location Quotients, 2002*

	Martinsville-Henry County		
	Location Quotient	% of Total Employment	Employment
Construction	0.44	2.3%	700
Manufacturing	2.74	32.4%	9,919
Wholesale trade	0.35	1.5%	472
Retail trade	1.25	14.6%	4,472
Transportation and warehousing	1.51	4.7%	1,433
Information	0.56	1.5%	447
Finance and insurance	0.43	1.9%	579
Real estate, rental, and leasing	0.50	0.8%	242
Professional and technical services	0.19	1.0%	307
Management of companies and enterprises	0.19	0.2%	75
Administrative and waste services	1.01	6.0%	1,835
Arts, entertainment, and recreation	0.66	0.9%	285
Accommodation and food services	0.68	5.4%	1,657
Other services	0.74	2.4%	748
Government	0.24	3.9%	1,185

*ND indicates that the data were not available due to privacy concerns. Chart does not include Agriculture, Mining, Utilities, Educational Services, or Health Care because these sectors were either non-disclosable or represent less than 1% of the total in both Martinsville and Henry. Government is all public sector employees including those working for the public school system.

Source: U.S. Bureau of Labor Statistics

Economic and Demographic Profile Martinsville-Henry County, Virginia

Earnings Location Quotients, 2002*

	Martinsville-Henry County		
	Location Quotient	% of Total Earnings	Earnings (in thousands)
Construction	0.42	2.3%	17,773
Manufacturing	2.47	35.2%	271,135
Wholesale trade	0.38	2.2%	17,320
Retail trade	1.32	9.8%	75,235
Transportation and warehousing	1.87	5.8%	44,999
Information	0.47	1.9%	14,398
Finance and insurance	0.33	2.5%	19,340
Real estate, rental, and leasing	0.44	0.6%	4,956
Professional and technical services	0.21	1.7%	13,413
Management of companies and enterprises	0.19	0.5%	3,514
Administrative and waste services	0.82	3.3%	25,689
Arts, entertainment, and recreation	0.75	0.7%	5,765
Accommodation and food services	0.70	2.1%	16,375
Other services	0.79	1.7%	13,003
Government	0.30	4.9%	37,657

*ND indicates that the data were not available due to privacy concerns. Chart does not include Agriculture, Mining, Utilities, Educational Services, or Health Care because these sectors were either non-disclosable or represented less than 1% of the total in both Martinsville and Henry. Government is all public sector employees including those working for the public school system.

Source: U.S. Bureau of Labor Statistics

Largest Retail Trade Sub-Sectors, First Quarter 2003*

	Martinsville-Henry Co.		Virginia % of total	Average Weekly Wage	
	Employees	% of total		Martinsville-Henry	Virginia
Motor vehicles and parts dealers	494	10.7%	13.5%	\$422	\$662
Building materials and garden supplies	266	5.7%	7.1%	\$525	\$503
Food and beverage stores	593	12.8%	15.5%	\$279	\$353
Gasoline stations	476	10.3%	8.6%	\$249	\$311
Clothing and accessories	223	4.8%	8.4%	\$219	\$290
General merchandise	854	18.4%	19.4%	\$318	\$352
Total Retail Trade Sector	4,629		392,510	\$325	\$422

*ND indicates that the data were not disclosed due to privacy considerations. Based on the available data, it can be estimated that the Clothing and Accessories sub-sector in Henry employed less than 9 people.

Source: Virginia Employment Commission

Establishments by Number of Employees, 2001:
Martinsville-Henry County, Virginia, and United States

